

INSIDE

PAGE 2

- Conference Updates and Highlights

PAGES 3

- Pre-Conference Workshops

PAGES 4

- Doctoral Student Voices Heard

PAGE 5

- The Treasurer's Report

PAGE 7

- IASWR Promotes Social Work Research

PAGE 10

- News From the Campbell Collaboration

PAGE 12

- SSWR Members Win Awards

PAGE 13

- SSWR Members Write Books

PAGE 15

- SSWR Members Get Grants

PAGE 24

- Abstract Reviewers for 2008

2008 SSWR Conference!



Ricky Fortune, President of SSWR, is

delighted to announce that Raynard S. Kington, MD, PhD, MBA, Deputy Director of the National Institutes of Health (NIH), will be the

keynote speaker at the 2008 SSWR conference in Washington, DC.

Dr. Kington was appointed Deputy Director of NIH in February 2003. Prior to this appointment, he had been Associate Director of the NIH Office of Behavioral and Social Sciences Research (OBSSR) since September, 2000. In addition to this role, from January, 2002 to November, 2002, he served as Acting Director of the National Institute on Alcohol Abuse and Alcoholism (NIAAA).

Prior to coming to NIH, Dr. Kington was Director of the Division of Health Examination Statistics at the National Center for Health Statistics (NCHS) of the Centers for Disease Control and Prevention (CDC). As Division Director, he also served as Director of the National Health and Nutrition Examination Survey (NHANES), one of the nation's largest studies to assess the health of the American people. Before assuming that post, he was a Senior Scientist in the Health Program at the RAND Corporation. While at RAND, Dr. Kington was a Co-

Director of the Drew/RAND Center on Health and Aging, a National Institute on Aging Exploratory Minority Aging Center.

Dr. Kington attended the University of Michigan, where he received his B.S. with distinction and his M.D. He subsequently completed his residency in Internal Medicine at Michael Reese Medical Center in Chicago. He was then appointed a Robert Wood Johnson Clinical Scholar at the University of Pennsylvania where he completed his M.B.A. with distinction and his Ph.D. with a concentration in Health Policy and Economics at the Wharton School and was awarded a Fontaine Fellowship. He is board-certified in Internal Medicine and Public Health and Preventive Medicine. In 2006, Dr. Kington was elected to membership in the Institute of Medicine of the National Academy of Sciences.

Dr. Kington's research has focused on the role of social factors, especially socioeconomic status, as determinants of health. His current research includes studies of the health and socioeconomic status of black immigrants, differences in populations in willingness to participate in genetic research, and racial and ethnic differences in infectious disease rates. His research has also included studies of the relationship between wealth and health status; the health status of U.S. Hispanic populations; the determinants of health care services utilization; the economic impact of health care expenditures among the elderly; and racial and ethnic differences in the use of long-term care.



Conference Updates and Highlights



The program for the Society for Social Work and Research's 12th Annual Conference, "Research That Matters" is in its final stages of development as the Fall 2007 SSWR Newsletter goes to press.

This year's call for abstracts yielded 1053 total abstracts submitted for oral and poster sessions, roundtables, workshops, and symposia, compared to 1372 abstracts submitted for the 2007 conference in San Francisco – a year during which the APM was not held, and 1093 submitted for the 2006 conference. Since each abstract is blindly rated by three independent expert reviewers, we conducted more than 3,000 reviews and did so during a one-month period this summer. We would like to thank the 200 members of the Abstract Review Committee (25 more than were used last year and 80 more than in 2006) for their excellent work. By increasing the number of

reviewers, we were able to reduce the average number of reviews conducted by each reviewer and also increase the breadth of expertise within our reviewer pool.

Our review process remains competitive with an acceptance rate for oral papers at 39%, a percentage which matches the acceptance rate for the 2006 conference, but is higher than last year's conference acceptance rate of 35%. The increase in acceptance rates from last year to this year is due to a combination of fewer papers submitted and a slightly larger venue which allows us to accommodate more sessions during the conference. We plan to schedule three oral papers per session this year compared to four in previous years to allow more presentation and discussion time devoted to each paper.

Continued on the next page

THE BOARD

PRESIDENT

DR. ANNE E. (RICKY) FORTUNE
UNIVERSITY AT ALBANY
RFORTUNE@ALBANY.EDU

PRESIDENT-ELECT

DR. SARAH GEHLERT
THE UNIVERSITY OF CHICAGO
S-GEHLERT@UCHICAGO.EDU

VICE PRESIDENT

DR. ALICE HINES
SAN JOSE STATE UNIVERSITY
AHINES@CASA.SJSU.EDU

VICE PRESIDENT-ELECT

DR. JAMES HERBERT WILLIAMS
UNIVERSITY OF DENVER
JAMES.HERBERT@DU.EDU

SECRETARY

DR. MARTHA MORRISON DORE
THE GUIDANCE CENTER INC.
MARTHADORE@AOL.COM

TREASURER

DR. SUE PEARLMUTTER
RHODE ISLAND COLLEGE
RPEARLMUTTER@RIC.EDU

MEMBERS-AT-LARGE

DR. MARIANNE BERRY
UNIVERSITY OF KANSAS
ANDYSMOM@KU.EDU

DR. DIANE DEPANFILIS
UNIVERSITY OF MARYLAND, BALTIMORE
DDEPANFI@SSW.UMARYLAND.EDU

DR. WALDO E. JOHNSON
UNIVERSITY OF CHICAGO
WEJOHNSON@UCHICAGO.EDU

DR. SUSAN LAMBERT
THE UNIVERSITY OF CHICAGO
SLAMBERT@UCHICAGO.EDU

DR. FLAVIO MARSIGLIA
ARIZONA STATE UNIVERSITY
MARSIGLIA@ASU.EDU

DR. ALLEN RUBIN
UNIVERSITY OF TEXAS, AUSTIN
ARUBIN@MAIL.UTEXAS.EDU

MS. BRIDGET WELLER
(STUDENT MEMBER)
UNIVERSITY OF NORTH CAROLINA -
CHAPEL HILL
BWELLER@EMAIL.UNC.EDU

Conference Updates and Highlights Continued

2008 Conference Highlights

The 2008 Annual Conference will feature two poster sessions showcasing results from approximately 100 individual research studies, 89 concurrent oral paper sessions, 22 symposia, 9 workshops, and 10 roundtables. This year, poster sessions will be grouped by topic to provide opportunities for exchange and networking for conference attendees and presenters alike. We also plan to offer several invited special sessions that will focus on the work of senior scholars in the field who are actively engaged in research that has implications for crafting, analyzing, and/or implementing public policy.

The Presidential Plenary will take place on Friday evening, January 18. This year's speaker is Dr. Raynard S. Kington, Deputy Director of the National Institutes of

Health, a noted researcher on social factors as health determinants.

The Distinguished Achievement Award, Outstanding Social Work Dissertation Award, Deborah Padgett Early Achievement Award, and Excellence in Research Award will be presented during the Presidential Plenary.

This year's Rosen Lecture will be delivered by Dr. Michael Sherraden, the Benjamin E. Youngdahl Professor of Social Development in the George Warren Brown School of Social Work at Washington University. Dr. Sherraden is the creator of the widely recognized and praised Individual Development Accounts (IDAs) and is also engaged in research and policy on civic engagement and productive aging. He has received national and international recognition for his leadership in these areas and for the impact this work has had on public policy.



Preconference Workshops

There will be a diverse offering of pre-conference methodology workshops by leading researchers at the 2008 SSWR conference in Washington, DC. The three scheduled Preconference Methods Workshops include:

- Quasi-experimental Designs with Charles S. Reichardt
- Culturally-Sensitive Research: Emerging Approaches in Theory, Measurement and Methods for Effective Research on Acculturation, Ethnic Identity and Gender with Felipe González Castro and Tanya Nieri



- Intervention Research: From Treatment Manuals to Funded Research with Mark W. Fraser and Sheryl Zimmerman

All three workshops will have limited enrollment. If you plan to attend one of these dynamic methodology workshops, you should register early!



Doctoral Student Voices Heard



Dr. Elizabeth Anthony, a post-doctoral scholar at the University of California, Berkeley, presented considerations, strategies, and resources for teaching as a doctoral student. Dr. Anthony encouraged students to consider their professional objectives and practice experience prior to agreeing to teach a course. In order to find teaching opportunities, Dr. Anthony suggested the strategy of investigating teaching opportunities within and beyond the social work school or department. She concluded by recommending students seek out university resources, such as teaching centers and mentors to aid in their teaching endeavors.

Bridget E. Weller, M.S.W.

Student SSWR Board Member-at-Large

Email: bweller@email.unc.edu

The doctoral student voice matters to SSWR. SSWR's commitment to meeting students' needs is evident by insuring doctoral student representation on the organization's Board of Directors, providing a Doctoral Student Panel and reception at the annual conference, and maintaining a year-round online job seeking resource.

Each year, the annual SSWR research conference begins with a panel targeting doctoral students concerns. Doctoral students select topics and speakers via an e-mail survey. At the 2007 SSWR conference in San Francisco, CA, doctoral students heard from four panelists on topics ranging from perseverance to work-life balance.

As the Student SSWR Board Member-at-Large, I began the 2007 panel presentation by asking attendees to visualize their early experiences as doctoral students, recalling the anxiety and excitement of those early days. Next, I spoke on the importance of perseverance in the face of the inevitable challenges of doctoral education. To close, I asked students to visualize their chair hooding them on graduation day.

Dr. Michael Lindsey, an Assistant Professor at the University of Maryland School of Social Work, shared the challenges and opportunities of transitioning from student to junior faculty. Dr. Lindsey stressed the importance of finding a senior faculty mentor who wants to help the student succeed as a faculty member. He suggested issues to consider when deciding between a post-doctorate or junior faculty position, such as whether or not the newly-minted Ph.D. needs more time to publish. He concluded with sharing his timeline for the first three years as a junior faculty member.

Dr. Lori K. Holleran Steiker, an Associate Professor at The University of Texas at Austin School of Social Work and winner of the 2007 Padgett Early Career Achievement Award, concluded the panel by sharing specific strategies for harmonizing personal and professional balance. To achieve balance, Dr. Holleran Steiker recommended students volunteer, minimize checking e-mail outside of work, and create quiet time for oneself. She stressed the importance of seeking out the right employment/environment fit and recommended observing and interviewing prospective employers prior to accepting a position.

Continued on page 6

The Treasurer's Report

SSWR Financial Position, as of December 31, 2006

Sue Pearlmutter, SSWR Treasurer

We present below a summary of financial results for SSWR for the period ended December 31, 2006. For the second year, SSWR has had a complete financial audit and, going forward, we will present these results in our fall newsletter, with interim reports at the annual conference and at the spring board meeting. As we reported earlier, 2006 was a very positive year for the Society. We had revenues of \$295,959 and expenses of \$185,951. Conference revenue (\$150,180), net of most conference expense, accounted for 51% of overall revenue. Membership dues of \$119,238 accounted for 40% of the revenue. An additional 7% (\$19,682) of the revenue was produced from job postings and the sale of mailing labels. Interest on our investments accounted for 2% of revenue (\$6,859). Total revenue for the period was \$295,959. Major expenses included printing and publications, the subscription service for members

and other printed materials, which accounted for 27% of our expenses, or \$49,724. Professional fees for management services and other consulting expenses amounted \$43,239 or 23% of expense. Expenses for advocacy were \$29,500 or 16% of overall expense. Travel and meeting expense for board members, speakers, and awardees was \$18,897 or 10% of expense. Conference expenses associated with the 2006 conference totaled \$15,844 or 8% of the expenses. Other costs, including awards and operational expenses accounted for 16% of overall expense or \$28,747. Overall expenses for the period were \$185,951. Our net income for the period was \$110,008.



Continued on the next page

Figure 1. SSWR revenues – January through December 2006

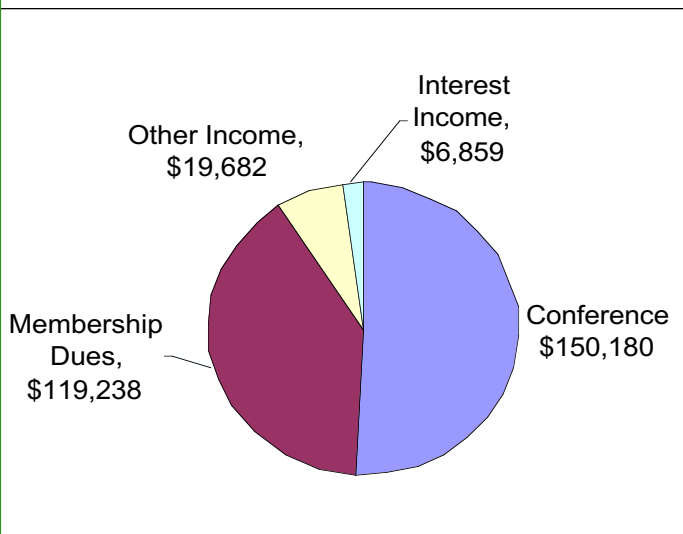
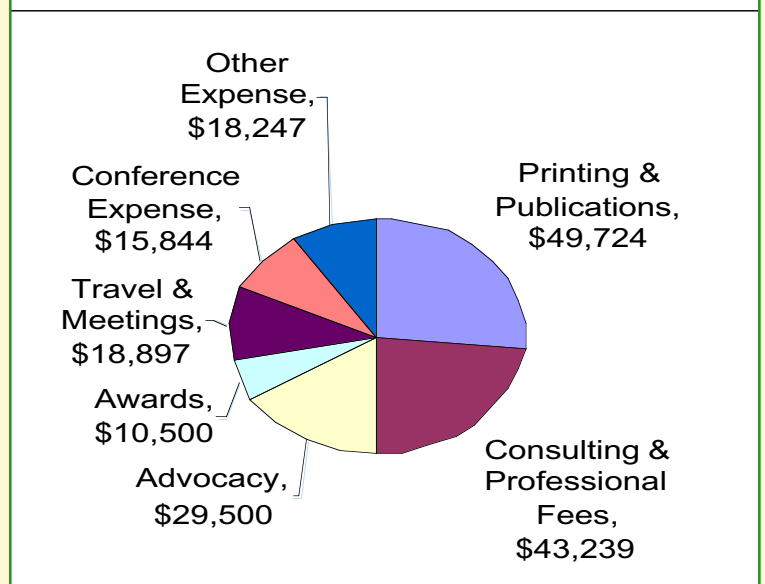



Figure 2. SSWR expenses – January through December 2006



The Treasurer's Report Continued

We include to the right, a simplified Statement of Financial Position which provides a snapshot of the organization's finances considering all of its assets, liabilities, and net assets. The Statement indicates that, as of December 31, 2006, SSWR had total assets of \$486,479, made up of cash and investments totaling \$432,526, Accounts Receivable of \$2,600, and Prepaid Expenses for the 2007 conference, insurance and other 2007-related expenses, of \$51,353. Liabilities include bills owed in the amount of \$9,757, and membership dues paid in advance for 2007 membership year, totaling \$89,556. The Society had past year surpluses and net income for 2006 of \$387,166, indicating liabilities and net assets that balance total assets.

The Board has continued its plan to conservatively maintain and expand the Society's assets. During the current year, the Society has increased its expenditure for conference management and has considered other opportunities for investing funds in services to members. Our assets will make it possible to take advantage of these opportunities to explore new initiatives. 

STATEMENT OF FINANCIAL POSITION

ASSETS

Cash and Investments	\$432,526.
Accounts Receivable	\$2,600.
Total Assets	\$486,479.

LIABILITIES & NET ASSETS

Current Liabilities	\$9,757.
Deferred Membership	\$89,556.
Unrestricted Net Assets	\$387,166.

TOTAL LIABILITIES

& NET ASSETS	\$486,479.
-----------------------------------	-------------------

Doctoral Student Voices Heard Continued from page 4


At the conclusion of the panel, doctoral students attended a reception which provided opportunities for networking with other students and the panelists.

The Doctoral Student Panel has grown in success each year due to the work of previous doctoral student Members-at-Large on the SSWR Board who left a strong legacy of motivating doctoral students.

In addition to organizing the Doctoral Student Panel, in response to student requests, I took on the task of helping SSWR pilot an online Job Registry at the 2007 conference. The purpose of the registry is to help students connect with employers year-round as well as during the conference. As a result of feedback from the pilot, the online Job Registry has undergone many changes. As experience with the reg-

istry grows, SSWR will continue to improve the effectiveness of this resource for both doctoral students and potential employers.

SSWR looks forward to the 12th annual SSWR conference in Washington, D.C in January 2008. The Doctoral Student Panel will again focus on the many transitions doctoral students undergo throughout their doctoral education. Two computer terminals will be available for doctoral students and others seeking employment through the online Job Registry.

The student voice matters to SSWR. Please share your ideas and opinions with SSWR either through emailing the student Member-at-Large, seeking out other board members, or via surveys. 



IASWR Promotes Social Work Research



by Barbara Solt, Ph.D.,
IASWR Senior Program Associate

As the Institute for the Advancement of Social Work Research (IASWR) approaches our fifteenth year of working on behalf of the social work profession, this update to the members of the Society for Social Work and Research (SSWR), one of IASWR's supporting organizations, provides an opportunity to reflect on the many ways that 2007 activities reflect IASWR's growing presence and strengthened relationships in the national research arena as well as its efforts towards increased intra-professional infrastructure development.

IASWR staff is recognized at federal research policy tables and increasingly invited to provide testimony or other input. Working with our sister social work organizations through the ANSWER Coalition, Social Work Reinvestment Initiative (SWRI) activities are setting in place the building blocks for a strengthened and interconnected profession-wide approach to evidence-based practice and support for social work research. At the same time, IASWR participates increasingly as a respected research advocate within the national multi-disciplinary behavioral and social science community. Endeavoring to work with social work programs and researchers throughout the country, IASWR continues its focus on intra-profession research infrastructure and capacity development through training workshops, on-site techni-

cal assistance and communications through IASWR's weekly e-alert service, *IASWR Listserv Announcements*, through *News and Notes from Washington* and through resources available on our website.

The following provides an overview of some of the activities that kept us busy in 2007.

Federal Efforts

- Submitted comments to the National Institute on Aging, providing input on their proposed strategic plan.
- As part of the NIH's efforts to improve the Scientific Review process, IASWR provided written testimony and commented at an NIH Center for Scientific Review "Open House" event
- Recommended social work researchers for numerous working groups and briefings including nominations for the Agency for Healthcare Research and Quality's advisory board.
- Participated in a Special Emphasis Review Panel for Translational Research Grants at CDC.
- Received a contract from the Office of Behavioral and Social Science Research (OBSSR) to increase awareness and implementation of the social-work specific funding opportunities, *Research on Social Work Practice and Concepts in Health*.

Continued on the next page

IASWR Promotes Social Work Research Continued

Mental Health to provide consultation and develop a report from the NIMH convened symposium on *Partnerships to Integrate Evidence-Based Treatments into Social Work Training* (<http://www.nimb.nih.gov/research-funding/newsletter/InsideNIMH-June2007.btm>). The final report will be available on the IASWR website.

- Participated in a number of “Friends of” coalitions which provide education to policy makers and encourage legislators’ continued support for funding of behavioral and social science research. These groups host Capitol Hill Briefings in which researchers present their work to House and Senate legislators and their staffs. IASWR regularly provides names of social work researchers to the planning of these activities.
- Provided input to legislation being formulated regarding training for minority researchers as well as other opportunities that might benefit social workers in emerging Health Disparities legislation. With other behavioral and social science colleagues, met with NIMH Director, Tom Insel, regarding mechanisms assuring minority researcher development.
- Met with the Justice Research Statistics Association to explore several avenues for collaboration. Subsequently, the June 2007 issue of JRSA’s quarterly newsletter included an article about IASW (http://www.jrsa.org/pubs/forum/forum_issues/for25_2.pdf).



these workshops to more than 275. This year’s offerings included Measurement and Confirmatory Factor Analysis Workshop taught by Donna Harrington and Elizabeth Greeno, and Qualitative Research and the use of Atlas.ti in Data Analysis with Jim Drisko repeating his highly popular presentation. About 40% of the attendees at these workshops are doctoral students.

- **Pre-Conference Workshops** – IASWR continued to coordinate the presence of representatives of major research funding entities at national social work conferences. (See offerings for the 2007 CSWE Annual Program Meeting and 2008 SSWR conference in the SSWR program and on the IASWR website.)
- **IASWR Listserv Announcements** – this weekly e-alert and resource service has reached a milestone subscribership of more than 2700. This service seeks to provide social work researchers with opportunities for funding, outlets for disseminating findings, news of relevance from national research circles, resources for teaching research or secondary data analysis, and research findings of relevance to practice or methodology development.
- **Hosting Interns** – This year IASWR hosted a second year MSW student from the University of Maryland, the BPD Summer Policy Fellow from Governor’s State University, and a BSW student from Texas Christian University who requested a placement with IASWR through a non-social work summer internship program.
- **Provided content for NASW Research Web Pages** (<http://www.socialworkers.org/research/default.asp>). To date 30 “pages” have been developed, 29 topical and one “What IS Social Work Research.”

Developing Researchers and Research Capacity

- **Summer Workshops** – Continued IASWR’s annual series “Rigorous and Relevant: Research Methods Workshops,” in 2007 two workshops involved 50 attendees, bringing the total number of doctoral students, faculty and researchers who have attended

Continued on the next page

IASWR Promotes Social Work Research Continued



Advocating for Social Work Research and the Social Work Reinvestment Initiative

- Hosted a lunch for IASWR and NASW Government Relations Staff to meet with Rachel Armstrong, the Nurse Fellow in Senator Inouye's office whose portfolio includes S. 106, the National Center for Social Work Research Act, other social work and health issues and Appropriations.
- Met with Portia Cole, a VCU faculty member who is a Fellow this year, on the Senate Health Education, Labor and Pensions Committee, regarding health disparities legislation.
- Convened a meeting with representatives from the ANSWER Coalition and federal and foundation representatives that do or could support social work doctoral education and dissertation research. The meeting was an outgrowth of the recommendations of the March 2006 Task Force on Social Work Doctoral Education and addressed a number of issues related to research infrastructure and capacity building.
- Participated on the planning team for the Social Work Reinvestment Initiative, with a key priority related to building support for social work research, (<http://www.socialworkreinvestment.org>).

Evidence-Based Practice

- The most recent issue of the University of Maryland School of Social Work's Magazine includes a cover story on Evidence-Based Practice. IASWR's executive director, Joan Levy Zlotnick, is one of two alumni who were asked to provide input to the article. (http://www.ssw.umaryland.edu/connections/summer_2007/cover_story.htm.)
- The September 2007 issue of *Research on Social Work Practice* includes articles prepared for the 2006 Symposium on Improving the Teaching of Evidence-Based Practice, organized by SSWR Board member, Allen Rubin. Zlotnik's article is entitled *Evidence-Based Practice and Social Work Education: A View from Washington*.
- Scanned social work education programs and agencies to identify partnership efforts to teach Evidence-Based Practice.
- Served as a lead consultant to Danya International on the development of Research and Empirical Applications for Curriculum Enhancement in Social Work (REACH-SW).
- Served as a co-sponsor and a member of the planning committee for the symposium, *Evidence-Based Practice in Child Welfare in the Context of Cultural Competence*. (<http://ssw.che.umn.edu/EBP-CulturalCompetence.html>)

IASWR looks forward to participating in the SSWR 2008 conference and to the many opportunities throughout the year to engage in social work research-strengthening endeavors.

News from the Campbell Collaboration



The Campbell Collaboration (C2) is an international, nonprofit organization that produces systematic reviews of research in social welfare, education, and crime and justice see:

www.campbellcollaboration.org

C2 is modeled on the Cochrane Collaboration, which produces systematic reviews of research in health care (www.cochrane.org). The C2 and Cochrane organizations are closely related.

Social work scholars have been actively involved in C2 from its beginnings in 1999. Haluk Soydan (USC) served as Co-chair of the C2 Steering Group for many years. Eileen Gambrill (Berkeley), Ed Mullen (Columbia), Bruce Thyer (FSU), John Schuerman (Chicago), and others were also involved in the development of the Collaboration.

Steering Group, replacing Haluk Soydan who served C2 so well in that position.

The Steering Group formed ad hoc working groups to develop proposals for changes in C2 governance and communication, membership and voting rights, information systems, and publications. C2 is in discussion with publishers who are interested in publishing the C2 Library.

C2 welcomes three new partner organizations: University of Toronto School of Social Work (Aron Shlonsky, lead), York University in Toronto (David Phipps, lead), and CanKnow (Phil Abrami, lead).

The next SG meeting will be held November, 8-10, 2007 in Copenhagen.

Organizational Development

The C2 Steering Group accepted an offer of core support from the government of Norway for the second half of 2007 and for 2008-2010. C2 is moving its central office to Oslo for that time period. Priorities for organizational development include moving toward a more open, democratic organizational structure and increasing the production of relevant and rigorous systematic reviews.

In June 2007, C2 ended its formal agreement with the American Institutes for Research (AIR). The two organizations will continue to work together on C2 colloquia, information systems, and other research projects. Phil Davies stepped down as C2 Executive Director, in order to continue his work at AIR.

The C2 Steering Group (SG) agreed that one third of its members will be replaced each year, and that new members will be elected by voting members (details of membership and voting procedures are being sorted out). Arild Bjørndal was elected Co-chair of the C2

C2 Social Welfare Coordinating Group (SWCG)

The SWCG produces systematic reviews on many topics related to social work and social welfare. Anyone can propose titles for a review, form a review team, and submit protocols for a C2 review to the SWCG or one of its review groups. These groups function much like peer-reviewed journals, obtaining anonymous critiques of protocols and completed reviews from substantive and methodological experts, and making editorial decisions. They also provide or arrange technical assistance for reviewers, especially on topics of information retrieval and meta-analysis.

At present the SWCG contains one formal review group: The Developmental, Psychosocial, and Learning Problems group is led by Geraldine Macdonald (coordinating editor) and Jane Dennis (coordinator) and is co-registered with the Cochrane Collaboration. A new Public Health review group is under discussion; if approved, this group will likely be co-registered with the Cochrane Collaboration as well.

Continued on the next page

➤ News from the Campbell Collaboration Continued



The SWCG wishes to expand its editorial base to include five or six editors, each with expertise in specific fields of social welfare practice. Once their training is complete, these editors might lead new review groups within C2 (whether in the SWCG or not). The SWCG will also expand its cadre of peer reviewers. Volunteers are welcome.

The SWCG will actively solicit systematic reviews. The Nordic Campbell Center and others have identified “burning topics” for systematic reviews in social welfare, and existing reviews that address those topics. The SWCG is inviting authors of previous reviews to consider “Campbellizing” their reviews. Since this usually involves making improvements in some aspects of the review process, the SWCG will explore sources of funding for these reviews. The SWCG will also issue a broad call for titles for systematic reviews in social welfare.

The SWCG will move toward an elected leadership; that is, the group’s Co-chairs and SG representatives will be elected by SWCG members. At an open meeting in London in May, those present discussed the nature of membership and voting rights. It was agreed membership would be open to anyone who has ever attended a C2 SWCG meeting (at SSWR or previous C2 colloquia), authored a C2 SWCG review, or served as a peer reviewer for the SWCG.

Recent and Upcoming Training and Events

C2 was the subject of several presentations at the last SSWR conference (in January 2007), including a full-day preconference workshop on systematic review methods.

C2 held its seventh annual colloquium in London in May 2007. The meeting featured plenary presentations by policy makers from around the world, a series of workshops on systematic review methods, and papers on research synthesis and the use of evidence in practice and policy. SSWR members who presented papers and chaired sessions at this meeting included Judith Rycus, Aron Shlonsky, Joanne Yaffe, and Joan Levy Zlotnik.

C2 was featured in invited presentations, sponsored by the Milbank Memorial Fund, at the George Warren Brown School of Social Work at Washington University in St. Louis in May 2007.

Workshops on systematic review methods were held in Stockholm in June 2007 and in Copenhagen in August 2007.

C2 speakers will be featured at a preconference workshop on systematic reviews of comparative effectiveness on October 16, 2007 in Washington, DC.

The eighth annual C2 colloquium will be held in Vancouver, Canada on May 12-14, 2008. The colloquium will be hosted by a consortium of Canadian organizations, with support from the American Institutes for Research. This colloquium will focus on the utilization of systematic reviews in practice and policy.

For more information, contact:

Julia H. Littell (jlittell@brynmawr.edu)

SSWR Representative to the

Campbell Collaboration

Editor and Co-Chair,

C2 Social Welfare Coordinating Group





SSWR Members Win Awards

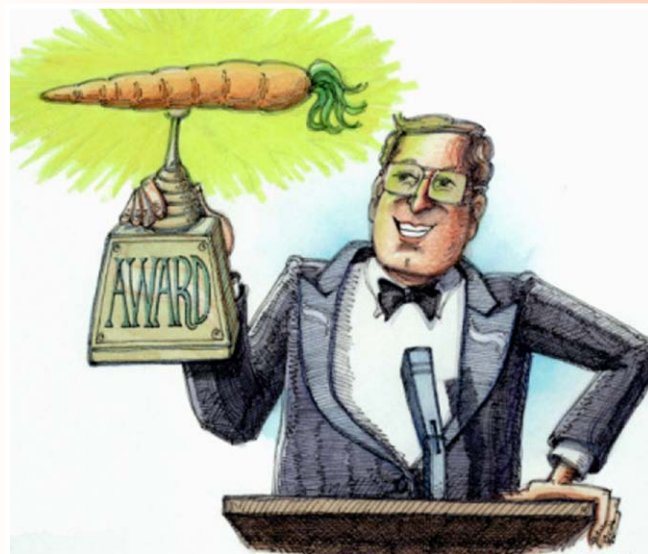
Adelpi University School of Social Work has been awarded \$40,000 from the Council on Social Work Education's Gero-Ed Center and the John A. Hartford Foundation, as part of CSWE's Master's Advanced Curriculum Project (MAC-P). The goal of this two-year project is to develop and evaluate an innovation to increase the capacity of advanced-level MSW students to serve older adults in Healthcare, Mental Health and Substance Abuse treatment settings. The AUSSW team consists of faculty members **Philip Rozario, Patricia Joyce, Bradley Zodikoff, Naomi Barasch, and Judy Fenster** (Principal Investigator).

2006-2007 was a year of acknowledgement for University of Michigan School of Social Work Dean **Paula Allen-Meares**. In addition to the honor of receiving the NASW Knee/Wittman Lifetime Achievement Award for her contribution to the social work profession, particularly in the fields of health and mental health, she chaired the New York Academy of Medicine's Practicum Partnership Program in 2006, and in 2007 was named Vice Chair for Section X of the Institutes of Medicine of the National Academies, where she also serves on the Nominating Committee. In addition, Dr. Allen-Meares and her colleagues are currently completing work on a two-year, \$900,000 grant from the Skillman Foundation (Detroit, MI), for which they provided technical assistance and consultation on the Good Neighbors Initiative.

Ram A. Cnaan, University of Pennsylvania, has been elected President of the Association for Research on Nonprofit Organizations and Voluntary Action (ARNOVA). Professor Cnaan is the first social worker to be elected to lead this interdisciplinary academic organization.

Dr. **Joan K. Davitt**, Assistant Professor and Hartford Geriatric Social Work Faculty Scholar at the University of Pennsylvania's School of Social Policy and Practice was awarded the 2007 James G. Zimmer New Investigator Award from the American Public Health Association's Gerontological Health Section. The award recognizing her manuscript *Racial Disparities in Access to Medicare Home Health Care: The Disparate Impact of Policy* will be presented at APHA's annual meeting in November.

University of Pennsylvania doctoral student **Jason Matejkowski** received the 2007 Award for



Interdisciplinary Innovation from the Graduate and Professional Student Association and the Provost's Office at the University of Pennsylvania for a project entitled, *Validation of the Personal Norm of Reciprocity Measure for Persons with Mental Illness*. The GAPSA-Provost's Award for Interdisciplinary Innovation encourages the collaboration of student scholars from different University departments and/or schools and includes a \$6,000 summer fellowship, jointly funded by GAPSA and the Office of the Provost.

Peter A. Newman, Ph.D., Associate Professor at University of Toronto Faculty of Social Work, has received the Early Researcher Award from the Ontario Ministry of Research and Innovation, which includes \$190,000 in funding for his project, *HIV Vaccine Trial Preparedness: Socio-behavioral Challenges of HIV Vaccine Development*. He was also named RBC Chair in Applied Social Work Research at University of Toronto.

Douglas C. Smith, University of Iowa, has received a loan repayment award in the amount of \$17,000 from the National Institute on Alcohol Abuse and Alcoholism (NIAAA), for making a two-year commitment to conducting research that focuses on minimizing the public health burden associated with heavy drinking among young adults.



SSWR Members Write Books

Cnaan, R. A. with S. C. Boddie, C. C. McGrew & J. Kang. (2006). *The Other Philadelphia Story: How Local Congregations Support Quality of Life in Urban America*. Philadelphia: University of Pennsylvania Press.

In *The Other Philadelphia Story*, drawing on the first-ever census of congregations in any American city, the authors provide an authoritative account of the functioning of congregations, their involvement in social services, and their support of other charitable organizations. An in-depth study of 1,392 congregations in Philadelphia, the book illuminates how these groups function as community hubs where members and neighbors alike gather throughout the week. Study findings show that almost every assembly of parishioners emphasizes caring for others, even if the help is modest. Thus, American congregations uphold an implicit but strong norm of social responsibility and work to improve the quality of life for members and nonmembers alike.



Franklin, C., Harris, M. B., & Allen-Meares, P. (Eds). (2006). *The School Services Sourcebook: A Guide for School-Based Professionals*. New York: Oxford University Press.

This book addresses effective interventions for students who are high risk because of psychosocial problems, and who may have mental, neurological and physical disorders that require special education. This book covers the mandates of the Individual with Disabilities Education Act (IDEA) and No Child Left Behind.

Gehlert, S., & Browne, T.A., (Eds). (2006). *The Handbook of Health Social Work*. Hoboken, NJ: John Wiley & Sons.

The Handbook of Health Social Work provides a comprehensive and evidence-based overview of contempo-

rary social work practice in health care. Written from a wellness perspective, the chapters cover the spectrum of health social work settings with contributions from a wide range of experts. The resulting resource offers both a foundation for social work practice in health care and a guide for strategy, policy, and program development in proactive and actionable terms.

Harris, M. B., & Franklin, C. (2007). *Taking Charge: A School-Based Life Skills Program for Adolescent Mothers*. New York: Oxford University Press.

Taking Charge is an empirically tested group intervention designed specifically to improve academic achievement and self-sufficiency for adolescent mothers, who face increased risk of school dropout and poverty. This eight-session, in-school group uses cognitive-behavioral principles to bolster life skills such as active coping, setting goals, and solving problems. The book contains a treatment manual with detailed guidelines for establishing and leading a Taking Charge group. It also reviews the successful results of three school-based trials of the program, illustrated with many vignettes and containing all the handouts and materials needed to implement the program.

Kreuger, L. W., & Neuman, L. (2006). *Research Methods in Social Work: Qualitative and Quantitative Applications 1e*. Boston: Allyn & Bacon.

In addition to the basics covered in major research methods texts, this book raises a number of issues on social and economic justice, empowerment and feminist research, and provides synopses of a number of social work theories as they inform (or oft-times fail to inform) research and evaluation. The chapter on

Continued on the next page



SSWR Members Write Books Continued

searching the literature and writing quantitative and qualitative reports as well as the chapter on ethics and politics in social work research are quite specific including numerous hardcopy and website sources.



Logan, T. K., Cole, J., Shannon, L., & Walker, R.

(2006). *Partner Stalking: How Women Respond, Cope, and Survive*.

New York: Springer.

This book examines the multiple aspects of partner stalking from the victim's perspective. Female survivors share their personal stories of partner stalking, and the authors provide an extensive look at the latest stalking research, providing readers with the most relevant implications for practice and future research. The book informs students, professionals, and researchers about: 1) Women's perceptions and definitions of stalking; 2) The health and mental health problems that co-occur with partner stalking and violent relationships; 3) Levels of stress caused by and/or exacerbated by partner violence and stalking; 4) Impacts on financial and employment status, social activities, and relationships; and 5) Victims' access to the justice system, and the need for better intervention by law enforcement and stronger policies and services to protect victims.

Rubin, A. (2007) *Practitioner's Guide to Using Research for Evidence-Based Practice*, New York: John Wiley & Sons.

This book provides a practitioner-oriented guide to appraising and using research as part of the EBP process. Current and future practitioners can use this book as a user-friendly reference to help them engage in all the steps of the EBP process, including that step in which they must differentiate between acceptable methodological research limitations and fatal flaws and accurately judge the degree of caution warranted in considering whether a study's findings merit guiding practice decisions. Although most of the book's contents focus on critically appraising research to answer

EBP questions, its final chapter simplifies the process of practitioner use of research methods to evaluate their own practice.

Steketee, G., & Frost, R.O. (2007). *Treatment of compulsive hoarding*. New York: Oxford. Therapist guide.

Steketee, G., & Frost, R.O. (2007). *Treatment of compulsive hoarding*. New York: Oxford. Client workbook.

This therapist manual and client workbook is the product of an NIMH R34 grant to Drs. Gail Steketee and Randy Frost to develop and test a comprehensive cognitive and behavioral treatment based on a theoretical model for understanding compulsive hoarding. The book describes the problem, the model, supporting research evidence and treatment outcome findings, including those from the R34 grant, and then provides instructions for clinicians in using this evidence-based CBT treatment.

Thyer, B. A. & Myers, L. L. (2007). *A Social Worker's Guide to Evaluating Practice Outcomes*. Alexandria, VA: CSWE Press.

This book presents a practical, user-friendly approach to evaluating the outcomes of social work clinical practice and of social welfare programs, using group or single-system research designs. It is ideally suited as an introduction to the topic of evaluating practice, aimed at the level of the individual social worker.

Wilhelm, S., & Steketee, G. (2006). *Treating OCD with Cognitive Therapy*. Oakland, CA: New Harbinger.

This treatment manual is the product of an NIMH R21 grant to Drs. Sabine Wilhelm and Gail Steketee to develop and test cognitive therapy developed specifically for OCD based on Beck's model. The book describes the problem and provides research findings, including outcome studies resulting from the trial, and then provides instructions for clinicians in using this evidence-based treatment.





SSWR Members Get Grants

Eugene Aisenberg, Assistant Professor at the University of Washington School of Social Work, recently received a grant from the National Institute of Mental Health to introduce a manualized telephone cognitive behavioral treatment (CBT) intervention for depressed low-income Latino primary care patients served by the Yakima Valley Farmworkers Clinic in rural Eastern Washington. This intervention will be tested among 80 low-income Latino women and men with depressive disorder who will be identified through systematic screening and randomized to the study intervention vs. usual care. This study will examine the effect of the intervention on depressive symptoms as well as patient-rated improvement, patient satisfaction, disability, and health risk behaviors. Using qualitative exit interviews of patients and providers, the study will also explore socio-cultural and practical barriers to depression care in this population and the need to further adapt the intervention to address these barriers. The study's ultimate objective is to develop a culturally appropriate, sustainable, and cost-effective depression treatment program that can be incorporated into routine primary care practices serving low-income rural Latinos and that can be tested in a full-scale randomized controlled trial. As the first study to examine the effectiveness of telephone-based CBT for a rural Latino population in the United States, this two-year study is groundbreaking. Direct costs funded by the R-34 award are \$422,226.



Beth Angell, Associate Professor at the School of Social Service Administration, University of Chicago and **Amy Watson**, Assistant Professor at the Jane Addams College of Social Work, University of Illinois-Chicago are Co-Investigators on a \$100,000 grant from the Chicago Community Trust to evaluate a forensic Assertive Community Treatment program for adults with serious mental illness being released from state prisons. Dr. Watson (with co-investigators Beth Angell, Jeffrey Draine, Melissa Morabito, and Victor Ottati) also received

an R34 grant for \$650,000 from the National Institute of Mental Health for a study entitled, *Testing a Systems Level Intervention to Improve Police Response to Persons with Mental Illness*. The study will examine the effectiveness and implementation of police-based crisis intervention teams in Chicago.

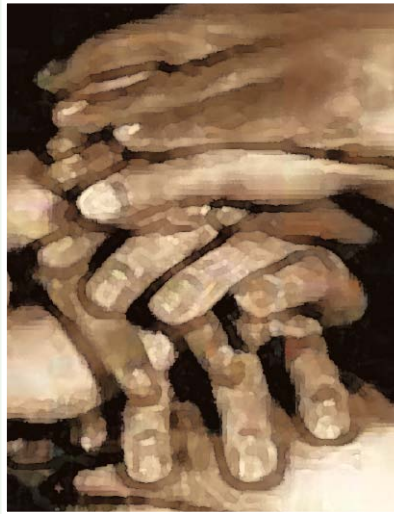
UNC School of Social Work Professor **Oscar Barbarin** has received a \$6.2 million grant from the W.K. Kellogg Foundation to address academic underachievement difficulties for boys of color (including African American, Native American and Latino). It is the Kellogg Foundation's largest grant to Carolina to date. The five-year grant will support the Promote Academic Success (PAS) Initiative, a research project that will promote the academic success of boys of color between the ages of 3-8 years of age using a multi-systemic approach. The project's goals are to mobilize and support partnerships among Head Start, public schools, families, and community agencies to focus on and improve the academic and social development of boys of color; and to identify, evaluate, and disseminate the most promising multi-systemic (family, school, community) interventions that increases learning and social adjustment of boys of color.

Concepcion Barrio, Ph.D., Associate Professor, University of Southern California School of Social Work, has been awarded a \$427,338 grant by NIMH to further develop and test a new culturally-based family intervention for Mexican Americans with schizophrenia. Family interventions will be developed that are socioculturally synchronous with the care giving ideology of Latino culture and that are culturally congruent with the needs, preferences, and cultural learning styles of this largely underserved and under-researched growing population.

Continued on the next page


 SSWR Members Get Grants *Continued*

Mercedes Bern-Klug, PhD, MSW, Assistant Professor at the University of Iowa School of Social Work, has been awarded \$31,000 from the Cancer and Aging Program at the University of Iowa (NIH-funded) for a mixed methods pilot research study, *Supporting Family Members to Participate in Palliative Care and End-of-Life Decision-Making on Behalf of Nursing Home Residents with Cancer*.



Rosalyn M. Bertram, Ph.D., University of Missouri-Kansas City School of Social Work, is the Principal Investigator on a Kansas City Health Care Foundation Safety Net grant of \$700,000 for 3 years to evaluate the fidelity and timing of forensic evaluations and services at the Child Protection Center, a child advocacy center for sexually abused children. The study will compare Center data with community response to reports of child sexual abuse through a shared database, tracking fidelity of community best practice protocol implementation across law enforcement, child welfare, family court, prosecutor's office, medical and social service providers. In addition, Dr. Bertram is evaluator on a 2-year, \$200,000 Kansas City Health Care Foundation Community Development grant to Children's Mercy Hospital to organize suburban and rural identification of and response to infants born to substance abusing mothers.

John R. Bola, Ph.D., Associate Professor at the University of Southern California School of Social Work has received a two-year NIMH RO3 award in the amount of \$100,000 to conduct secondary analysis of the Treatment Strategies in Schizophrenia dataset to look for treatment moderators and latent trajectory subgroups in an effort to identify different groups responding better to different treatments.

Ram A. Canaan, Ph.D., University of Pennsylvania School of Social Work and Social Welfare, has received a grant from the Jesse Ball DuPont Foundation in the amount of \$273,105, to assess faith resources for effec-

tive community planning in Wilmington, Delaware. The purpose of the grant is to examine the social services and organizational behavior of local religious congregations, assessing their capability to collaborate with formal social services, and to provide data for community institutional capacity.

Dr. Canaan has also received a grant from the City of Philadelphia in the amount of \$110,000 to conduct a census of all organizations offering social services to individuals returning to the community from prison as well as an analysis of needed services for this population and their potential locations.

Dr. Jorge Delva, Associate Professor and Co-Director of the Curtis Research and Training Center at the School of Social Work, University of Michigan, was awarded a \$3.8 million RO1 from the National Institute on Drug Abuse to conduct a longitudinal study of drug use among 1200 Chilean adolescents and their families in Santiago, Chile. The main purpose of the study is to prospectively investigate drug use trajectories among youth.

Diane DePanfilis, Ph.D., MSW, faculty member at the University of Maryland School of Social Work, is Principal Investigator, on a study entitled, *Child Welfare Accountability: Efficiency and Effectiveness of Child Welfare Services*, funded for the first study year by the Maryland Higher Education Commission in the amount of \$433,072. Terry Shaw, Ph.D. and Sarah Kaye Faraldi, Ph.D., are Co-Investigators. The study will be conducted in collaboration with the Maryland Department of Human Resources. Dr. DePanfilis has also received funding in the amount of \$105,000 (6/1/07-6/30/08) from the Maryland Judiciary, Administrative Office of the Courts, to evaluate the process and outcomes of court programs. The initial study year will focus on an evaluation of truancy court models and a comparison of protocols for conducting custody evaluations. The Co-Investigator on this project is Clara Daining, Ph.D., MSW.

Continued on the next page

SSWR Members Get Grants Continued

Theresa J. Early and **Keith Warren**, Associate Professors at The Ohio State University College of Social Work, are co-Principal Investigators on a project, *Recovery Emphasis in Ohio Behavioral Health Organizations' Inpatient Units*, funded in the amount of \$110,620 by the Ohio Department of Mental Health (1/07-12/08). This project uses secondary and primary data to detect recovery-oriented organizational change in two psychiatric hospitals following an initiative to refocus clients' rights advocates as "recovery and rights advocates."



Jeffrey L. Edleson, Ph.D., Director, Minnesota Center Against Violence & Abuse, and Professor and Director of Research, School of Social Work, University of Minnesota, is Co-Principal Investigator with **Taryn Lindhorst**, Ph.D., University of Washington School of Social Work, on a study of battered mothers who flee with their children to the United States and then are charged with international child abduction in US courts. This study was funded by the National Institute of Justice in the amount of \$370,697.

In addition, Dr. Edleson is Co-PI with **Roger Roffman**, DSW, University of Washington School of Social Work, on a study of early intervention using motivational enhancement strategies to promote help-seeking by substance abusing men who batter. The National Institute of Drug Abuse funded this study in the amount of \$1,394,000.

Dr. Edleson is also Co-PI on a study of an emotional coaching intervention with battered mothers and their children funded by NIMH (\$556,131). His collaborator on this study is Lynn Katz, Ph.D., of the University of Washington Psychology Department.

Kristin Ferguson and **Haluk Soydan**, faculty members at the University of Southern California School of Social Work, have been awarded a subcontract by the Salvation Army which is the recipient of a grant by the US Department of Justice for its *Commercial Sexual Exploitation of Children (CSEC) Community Intervention Project (CCIP)*. The project's objective is to

train a small group of professionals who work with CSEC and who in turn will train other CSEC staff at five sites throughout the country. Drs. Ferguson and Soydan will conduct a qualitative and quantitative investigation and analysis of the CCIP program.

Stacey Freedenthal, Ph.D., University of Denver School of Social Work, has received a \$42,000 grant from the State of Colorado, Department of Public Health and Environment, Office of Suicide Prevention, to evaluate the Yellow Ribbon Suicide Prevention Project in that state. She has also

received \$14,000 from the University of Denver Professional Research Opportunities for Faculty Fund to conduct a project titled, *Assessing Suicidal Intentions of Troubled Youth*, in which she will conduct interviews with psychiatrically hospitalized youth.

Diana Garland, Dean of the Baylor School of Social Work, is conducting a national random survey of the prevalence of clergy sexual abuse across all religious groups in America. The study focuses on sexual activity with adults in congregations and in counseling relationships with religious leaders. Funding for this study has been received from the Baptist General Convention of Texas (\$11,000) and the JES Edwards Foundation (\$20,000).

Sarah Gehlert, Ph.D., Associate Director for the Institute for Translational Medicine, Co-Leader for the Community Translational Science Cluster, and Associate Leader of the ITM at The University of Chicago, announces the following new research grants for which she is co-investigator: \$46,077,030 (9/30/07-9/29/12) for *Re-Engineering Translational Research at the University of Chicago*. The goals of the CTSA program are to train scientists and health care providers at the University of Chicago and in the community to determine the molecu-

Continued on the next page



SSWR Members Get Grants Continued

lar underpinnings of disease or disease preposition in any individual patients; to develop, test, implement, and make readily available to residents in the community personalized therapies directed toward those individual underpinnings; and to do this in a way that is rigorous, valid, efficient, ethical, and respectful of the communities needs and values; and, \$2,587,631 from the National Institute for Child Health and Development for the National Children's Study: Greater Chicago Study Center to follow 100,000 children over time to understand pre-and post-natal, childhood, adolescent, and young adult influences on health.



severe mental illness and substance abuse who either completed or dropped out of a National Institute of Drug Abuse randomized treatment study to determine the reasons for participants' course of action.

Dr. Michal Grinstein-Weiss, assistant professor at the University of North Carolina at Chapel Hill received \$750,000 grant from the John D. and Catherine T. MacArthur Foundation to study the long-term impact of Individual Development Accounts and asset building on social and economic well-being. Her research team includes: Co-Principal Investigators Michael Sherraden from

Washington University, William Rohe from UNC, and William Gale from Brookings Institute.

Christine C. George, Ph.D., Loyola University Center for Urban Research and Learning and **Susan F. Grossman**, Ph.D., and **Marta Lundy**, Ph.D., Loyola University School of Social Work, in collaboration with the City of Chicago Mayor's Office on Domestic Violence, have received funding from the Illinois Criminal Justice Information Authority to conduct a project beginning in October of 2007 that looks at the dynamics of shelter utilization and how it relates to the process of and readiness for change among women who are victims of domestic violence. This project will use both existing data from the Illinois InfoNet System (a statewide data base the has information about domestic violence service utilization) and City of Chicago Domestic Violence Help Line as well as new quantitative and qualitative data from two waves of interviews with a sample of women who are victims of violence and utilizing shelters in the City of Chicago. The grant award is \$118,386 for one year.

Deborah Gioia, Ph.D., University of Maryland School of Social Work faculty member, has received a grant of \$22,500 from the Baltimore Veteran Administration's Mental Illness Research Education and Clinical Center for a one-year pilot study interviewing individuals with

James A. Hall, Ph.D., LISW, is Principal Investigator of a project titled *Primary Health Care and Underage Drinking in Rural Iowa*, funded in the amount of \$1,526,581 by the National Institute on Alcoholism and Alcohol Abuse. This project focuses on a significant public health problem – underage drinking in rural Iowa. In many of our rural communities, adolescents describe a culture of binge drinking – especially on the weekends. These episodes of alcohol consumption often lead to negative consequences ranging from school absence, conflict with parents, physical violence, motor vehicle accidents, unprotected sexual activity and use of other illegal substances. Primary health care clinics can have a positive impact on this culture of alcohol consumption by underage drinkers through a combination of primary prevention and early intervention. The overall mission of this project is to develop a research infrastructure in primary health care settings in rural Iowa so that interventions to address underage drinking can be evaluated.

Continued on the next page



SSWR Members Get Grants Continued

Anne Jones, Ph.D., Clinical Assistant Professor at the University of North Carolina School of Social Work, has received \$2,000,000 from the Administration for Children and Families for a 5-year study entitled, *Using a Relationship Skills Intervention to Strengthen Newly Forming Families*. Dr. Jones will lead and evaluate the project which will be implemented through the Durham County Health Department and Cooperative Extension Service. It is designed to strengthen couple relationships among newly forming families.



The Robert Wood Johnson Foundation's Substance Abuse Policy Research Program has funded **Dr. Sheryl Pimlott Kubiak** of Michigan State University's School of Social Work to investigate the influence of various funding sources on the delivery of substance abuse treatment within the community. This national study surveys administrative personnel in different state agencies (e.g. Substance abuse treatment, Departments of Corrections) to assess policies, treatment regulations and interface between systems.

Christopher R. Larrison, Ph.D., University of Illinois at Urbana-Champaign School of Social Work is the Principal Investigator, Susan L. Schoppelrey, Ph. D., Radford University Waldron College of Health and Human Services, is the Co-PI, and Barry J. Ackerson, Ph.D., University of Illinois at Urbana-Champaign School of Social Work, is the Co-Investigator on an NIMH R34-funded project to identify the organizational factors that influence disparities in treatment outcomes for African American clients receiving services from 12 community mental health agencies (CMHAs) in rural areas of the Upper Mississippi River Basin. The present study builds upon two preliminary studies to examine the interaction among factors at all three levels (client, staff, and organization) that may influence treatment outcomes. The amount of this award is \$620,000 over three years.

Mo Yee Lee, Ph.D., Professor, College of Social Work, The Ohio State University, has received funding from the Ohio Department of Mental Health, to conduct a study in collaboration with A. Zaharlick and D. Akers, entitled *Treatment of trauma survivors: Effects of meditation practice on clients' mental health outcomes*. The study will examine the effectiveness of a six-week meditation class on mental health outcomes among female trauma survivors with histories of prolonged interpersonal abuse. The study will also explore the utility and cultural adaptability and appropriateness of using meditation, a primarily Eastern-based practice, as an intervention with clinical populations in the U.S.

Julia Littell, Ph.D., Professor at the Bryn Mawr College of Social Work and Social Research, has received a two-year grant of \$61,000 from the Swedish Institute for Evidence-Based Social Work Practice to support her efforts to build capacity of social work scholars to conduct rigorous systematic reviews of research on topics relevant for social work and social welfare.

Flavio Francisco Marsiglia, Ph.D., Foundation Professor of Cultural Diversity & Health and Director of the Southwest Interdisciplinary Research Center (SIRC), School of Social Work, Arizona State University, has been awarded a P20 grant in the amount of \$7,178,038 for five years by the National Center on Minority Health and Health Disparities (NCMHD) at NIH. The title of the research funded under this grant is *Health Disparities Research at SIRC: Cultural Processes in Risk and Resiliency*. The award will fund establishment of an NCMHD Research Center of Excellence to explore the complex factors influencing minority health and health disparities, and to contribute to the Department of Health and Human Services' (DHHS) initiatives for improving minority health and reducing health dispari-

Continued on the next page



SSWR Members Get Grants *Continued*

ties among the racial and ethnic minorities of the U.S.-Mexico border region.

Dr. Marsiglia is also the ASU Principal Investigator on an R01 study funded by NIDA in collaboration with researchers at Penn State. This is a five year project to study the application of "Keepin' it REAL," a SAMHSA model substance abuse prevention program, with multicultural populations.

The study aims are (1) to describe the development of ecological risk and resiliency factors as Mexican/Mexican American students transition from 5th to 9th grade and undergo acculturation processes; (2) to enhance the existing 7th grade Keepin' it REAL multicultural intervention (a SAMSHA model program) by increasing the dosage adding acculturation related material, and by examining the most efficacious age of intervention, 5th versus 7th grade; and (3) to examine ecological risk and resiliency factors, such as parental monitoring, perceived discrimination and acculturation stress, as moderators of prevention effects.

Rhonda Montgomery, the Helen Bader Chair of Applied Gerontology at UW-Milwaukee has recently received a \$240,000 grant from the Alzheimer's Association (with \$337,000 of in-kind support from the endowed chair committee, which was funded by the Helen Bader Foundation). The grant will assess the impact of an evidence-based care management protocol as it relates to family caregivers and organizations. The 30-month study will include 80 care managers and 400 family caregivers from Georgia, Michigan, and Washington, and will focus on the health and well-being of family members caring for individuals with dementia, in addition to the use and costs of support services by caregivers. The care management protocol being studied is grounded in Dr. Montgomery and colleagues' Caregiver Identity Theory, which examines the type and extent of caregiver distress being experienced and provides recommendations for assistive services. The project will contribute to a growing body of knowledge about effective caregiver interventions by increasing knowledge



for tailoring services to unique circumstances, beliefs, and needs of family caregivers.

Professor Vijayan K. Pillai, University of Texas at Arlington, has received a fellowship from the Conference of NGOs in Consultative Relationship with the United Nations. This award is given to "authors of the most pioneering and consciousness-raising papers for participating

in the First Civil Society Development Forum 2007: A Platform for Development: Countdown to 2015." This forum was held in June 2007, in Geneva, Switzerland. Dr. Pillai's paper was entitled, Reproductive Health and Millennium Development Goals in Developing Countries.

Rogério M. Pinto, Ph.D., Assistant Professor at the Columbia University School of Social Work, has received an NIMH K01 Award in the amount of \$811,347 for five years to identify factors that influence research collaboration and to test a model of collaboration among service providers. In addition, he has received a Research Fellowship in the amount of \$20,000 from the Center for the Study of Social Work Practice to support his research study titled, The role of research collaboration in evidence-based practice. The purpose of this study is to determine the extent to which research collaboration between practitioners and HIV prevention researchers influences practitioners to use research findings and to engage in evidence-based practice.

Karen A. Randolph and **Melissa D. Radey**, of the Florida State University College of Social Work have been awarded a two and a half year grant in the amount of \$437,000 from the Florida Department of Children and Families to develop and test a population-based intervention to increase the use of prevention-based parenting practices among families in Florida. Dr. Randolph is the Principal Investigator and Dr. Radey the Co-PI on the project.

Continued on the next page

SSWR Members Get Grants Continued

Helen Z. Reinherz, Sc.D., Professor at Simmons College in Boston, is Principal Investigator of a funded project entitled, *How Does the Family Matter? Influences of Child and Adolescent Family Factors on Adult Mental Health and Functioning*.

There has been little research from prospective longitudinal studies identifying the long-term effects of critical aspects of child and adolescent family environments on adult mental health and functioning. This gap will be filled by conducting additional analyses with data collected by the Simmons Longitudinal Study (SLS) to determine how family risk and health-promoting variables from childhood and adolescence (age 5-15) predict a broad range of adult mental health and functioning outcomes at age 30. The SLS is one of the longest and most comprehensive multi-disciplinary, multi-method community-based longitudinal studies in the U.S. that has traced the life course of a single-aged cohort (400 participants) from early childhood (age 5) to adulthood (age 30). Data were collected at 8 major time points from multiple informants, using measures with demonstrated reliability and validity.

Beth Spenciner Rosenthal, faculty member at York College and the Graduate Center of the City University of New York, has again received funding from the National Institute of General Medical Sciences for her research on social stress and its psycho-social outcomes among adolescents. She was awarded \$300,000 for the 2007-08 academic year. Her research focuses on the relationship between social stressors and mental health, factors that cause stressors, and factors that moderate the relationships between the stressors and mental health.

Scott Edward Rutledge, Ph.D., MSW, Assistant Professor, Temple University School of Social Administration, is Co-Investigator on a NIMH-funded



study entitled, *Help Us, Save Us! HIV/STI Prevention Intervention for High-Risk Black Men*. This five-year study is testing the efficacy of an individual-level counseling intervention to reduce HIV risk behavior among African American men who have sex with men. Dr. Rutledge is also Co-PI on a study funded by the Centers for Disease Control and Prevention with Dr. Larry Icard as Principal Investigator. This

two-year study is testing the feasibility/efficacy of a group level intervention for male HIV positive inmates to reduce risk of HIV transmission and to increase access of medical and support services following release.

Aron Shlonsky, Ph.D., University of Toronto Faculty of Social Work, has received a 3-year grant from the Social Sciences and Humanities Research Council in the amount of \$71,300 to conduct a study entitled, *Risk and response: A mixed methods approach to enhance decision-making in child welfare*. Dr. Shlonsky has also received a 3-year \$245,609 grant from the Ontario Ministry of Children and Youth Services for a study of the New Ontario Decision Support System. In addition, along with colleagues T. Gadalla and R. Alaggia, Dr. Shlonsky is the recipient of a \$278,819 grant (2007-2010) to study differential response in cases of domestic violence. He also received the Ontario Early Researcher Award of \$150,000 for a study entitled, *Applying Information and Communication Technology to Improve Outcomes for Maltreated Children*.

Gail Steketee, Ph.D., Boston University School of Social Work, is Principal Investigator on a 4-year NIMH-funded (\$1,148,527) study entitled, *Psychopathology for Compulsive Hoarding*. The aim of this study is to examine (a) the historical features of compulsive hoarding and (b) relationship to other disorders, (c) to explore possible etiological features, and (d) to examine the validity of self-report measures of hoarding in a sample

Continued on the next page



SSWR Members Get Grants *Continued*

of 120 clients with hoarding, 120 with obsessive compulsive disorder and 120 community participants without significant hoarding or psychiatric symptoms.

Alexa Smith-Osborne, Ph.D., Assistant Professor at The University of Texas at Arlington (UTA) School of Social Work, has received two research grants: a \$10,000 Research Enhancement grant from UTA to do a pilot study, a randomized clinical trial of supported education interventions for veterans returning to college, and a \$35,000 CSWE Gero-Ed grant to develop curricular innovations in gerontology content infusion in the MSW mental health track and evaluate outcomes (co-investigator Norman Cobb).

Cheryl Springer, MSW, Ph.D., Salem State College School of Social Work, is the Principal Investigator on a project entitled, Integrating Suicide Prevention and Intervention in MSW Education, a year-long research and implementation project funded by the Massachusetts Department of Public Health. The project is based on findings from a previously funded planning grant and involves MSW students, classroom faculty, and field education faculty who will identify and evaluate MSW students' competencies regarding suicide prevention and intervention.

Susan Stern, Ph.D., Faculty of Social Work University of Toronto, is Co-Investigator on a study entitled Promoting the adjustment of immigrant adolescents: The role of acculturation, family relationships, and parenting funded by a 3-year Social Sciences and Humanities Research Standard Grant (\$110,711). The Principal Investigator on this project is Catherine Costigan, University of Victoria Department of Psychology.

Dr. Lorraine R. Tempel has received funding in the amount of \$45,000 from the National Resource Center for Family Centered Practice and Permanency Planning (NRCFCPP) at the Hunter College School of Social Work to conduct an exploratory pilot study about the impact of child protective services on the development of a working alliance between preventive services social workers and parents referred for counseling due to a report of child abuse or neglect. It is based upon in-depth qualitative interviews with social workers and clients who have

responded to agency and community outreach by the researcher.

Ann Marie Yamada, Ph.D., University of Southern California School of Social Work, has received a 3-year NIMH R34 grant in the amount of \$658,251 for a study entitled, Assessing Sociocultural Factors in Psychosocial Rehabilitation Services. The purpose of this grant is to adapt and test a new intervention to enhance provider assessment and response to sociocultural issues in the routine provision of psychosocial rehabilitation services.



Doctoral Students' Dissertation Support

Tara Black, a fourth year student in the Doctorate program at the Faculty of Social Work, University of Toronto, received an Ontario Graduate Scholarship in the amount of \$15,000 for the 2006/2007 academic year to support her dissertation research to determine the response of the Canadian child welfare system to cases of domestic violence reported to child welfare agencies using data from the 2003 Canadian Incidence Study of Reported Child Abuse and Neglect (CIS-2003). She was also awarded a Social Sciences and Humanities Research Council of Canada (SSHRC) Doctoral Fellowship in the amount of \$20,000 and a \$5,000 award from the Faculty of Social Work to support this study. Her dissertation supervisor is Dean Cheryl Regehr.

Nina Esaki, a doctoral student at the University at Albany School of Social Welfare is the recipient of two dissertation grant awards. The first is the University at Albany's Initiatives for Women Award for \$500 and the second is the Foundling/Fontana Center Dissertation in the Field of Child Welfare Award for \$7,500. Ms. Esaki's dissertation topic is the Effect of Maternal Childhood Victimization on Parenting Attitude and Behavior, using

Continued on the next page



SSWR Members Get Grants Continued

the Longitudinal Studies of Child Abuse and Neglect (LONGSCAN) database.

Kathryn G. Kietzman, MSW, John A. Hartford Doctoral Fellow, UCLA School of Public Affairs, has been awarded a \$30,000 dissertation grant from the Department of Health and Human Services, Agency for Healthcare Research and Quality. Her study, *A Reason to Care: Motivation to Assume a Paid Caregiver Role and Correlates to Well-Being among Family Members and Friends*, examines the experiences of homecare workers who provide personal assistance services to low-income disabled and elderly relatives and friends.

Nalini Negi, a doctoral candidate at The University of Texas at Austin School of Social Work, is the 2007 recipient of the Frances Fowler Wallace Memorial for Mental Health Dissertation Award awarded by the Hogg Foundation for Mental Health. Ms. Negi's dissertation study will focus on the well-being of urban Latino day laborers, a little-researched topic. Using mixed methods her dissertation research will examine the protective and risk factors that impact the well-being of day laborers.

Lauren Hersch Nicholas, a doctoral student and Hartford Fellow at the Columbia University School of Social Work, has been awarded a dissertation research grant (R36) from the Agency for Healthcare Research and Quality in support of her dissertation titled, *Medicare Advantage? The Effects of Managed Care on Medicare Quality, Cost and Enrollment*.

Danielle Parrish, MSW, Doctoral Candidate at the School of Social Work, University of Texas at Austin, received a 2007-2008 Social Work Doctoral Dissertation Fellowship in the amount of \$16,563 from the Center for the Study of Social Work Practice, a joint program of the Columbia University School of Social Work and the Jewish Board of Family and Children's Services. Her dissertation research will evaluate the effectiveness of a seven-hour continuing education training on the Evidence-Based Practice (EBP) process for practitioners on practitioner attitudes, intentions, knowledge, perceived barriers and behaviors related to the implementation of EBP in the practice setting. These trainings will be offered in collaboration with the University of Texas at

Austin School of Social Work's Professional Development Office and the University of Texas at San Antonio four times in two locations: San Antonio and Dallas.



Tonia Stott, doctoral candidate at Arizona State University, has received an R36 Award from National Institute on Drug Abuse in the amount of \$48,600 for FY2007 and \$48,600 for FY 2008 to begin filling a major gap in research on youth who age out of the foster care system. The specific aims of this study are to 1) describe substance use/abuse and sexual risk-taking in this vulnerable population, and 2) test theory-driven hypotheses about these outcomes including a) foster care placement instability is positively associated with early adult substance use and risky sexual behaviors; b) placement instability is positively associated with poor emotional and social well-being; and c) emotional and social well-being mediates the effect of placement instability on drug use and risky sexual behaviors. In addition, gender and ethnic differences in these relationships will be explored. The sample will include young adults who turned 18 years old while in Arizona's foster care system during state fiscal years 2006 and 2007. They will be interviewed via telephone to garner data to address the research questions. Additionally, data from the Arizona State Department of Economic Security will be abstracted to provide information on placement length and stability, and related variables. Her mentors are Dr. Mary Gillmore and Dr. Nora Gustavsson. The University of Texas at Austin, School of Social Work doctoral candidate **Liliane Windsor** has been awarded a diversity supplement (\$40,000) from the National Institute on Drug Abuse to support her pre doctoral research at the National Development Research Institutes in New York for two years. Ms. Windsor moved to New York in January, 2007, to conduct her dissertation research under the supervision of her chair Laura Lein, using data collected by Dr. Eloise Dunlap's study entitled "Transient Domesticity & Violence in Distressed Households." Ms. Windsor will examine the interaction between oppression, drug use, and violence in the lived experiences of young, impoverished African American women who use drugs and/or alcohol in New York.





Abstract Reviewers for 2008

The SSWR Board, Conference Committee, and Conference Chair, Alice Hines, would like to express their appreciation to the following individuals who served as abstract reviewers for the 2008 conference. Their work was vital to the conference's success.

NeilAbell
 Laura S.Abrams
 LeslieAlexander
 PaulaAllen-Meares
 JulieAltman
 Mary AnnAmodio
 Jeane W.Anastas
 ArleneAndrews
 WendyAuslander
 MichaelAustin
 JudithBaer
 OscarBarbarin
 ConcepcionBarrio
 Richard P.Barth
 AmandaBarusch
 LarryBennett
 Kia J.Bentley
 MarlaBerg-Weger
 BarbaraBerkman
 Cathy S.Berkman
 Jill DuerrBerrick
 MarianneBerry
 StephanieBerzin
 SondraBeverly
 DavidBiegel
 BeverlyBlack
 James A.Blackburn
 Sarah E.Bledsoe
 Gary L.Bowen
 Natasha K.Bowen
 A. SuzanneBoyd
 JohnBrekke
 TeriBrowne
 DeniseBurnette
 DavidBurton
 AmyButler
 FredButtall
 LeopoldoCabassa
 LethaChadiha
 Mimi V.Chapman
 Namkee G.Choi
 JulianChow
 GraceChrist
 RamCnann
 EdwardCohen
 Mary ElizabethCollins
 CynthiaCook
 KevinCorcoran

MarkCourtney
 Renee M.Cunningham-Williams
 AmyD'Andrade
 LarryDavis
 DianeDePanfilis
 EllenDeVoe
 SadhnaDiwan
 MarthaDore
 JamesDrisko
 Catherine N.Dulmus
 Ruth E.Dunkle
 Jeffrey L.Edleson
 TonyaEdmond
 DianeElze
 KathleenFaller
 NaomiFarber
 KathyFarkas
 AntoinetteFarmer
 JerryFloersch
 RowenaFong
 Anne E.Fortune
 MarkFraser
 StaceyFreedenthal
 RuthFreedman
 LarryGant
 SarahGehlert
 ZviGellis
 ElizabethGershoff
 LewayneGilchrist
 Mary RogersGillmore
 DeborahGioia
 MichaelGorman
 JanGreenberg
 MichalGrinstein-Weiss
 ShenyangGuo
 MeekyungHan
 Wen-JuiHan
 SydneyHans
 Eric R.Hardiman
 Julia F.Hastings
 Julia R.Henly
 DanielHerman
 JoeHimle
 AliceHines
 JamesHinterlong
 JohnHodges

GaryHolden
 HeatherHorton
 MatthewHoward
 Chien-ChungHuang
 Roberta R.Iversen
 JeffreyJenson
 WaldoJohnson
 Lani V.Jones
 SusanKemp
 Mary EllenKondrat
 JordanKosberg
 LarryKreuger
 JudyKrysik
 SusanLambert
 CraigLeCroy
 SonyaLeathers
 PeterAllen Lee
 CathleenLewandowski
 JuliaLittell
 GordonMacNeil
 RebeccaMacy
 JeanneMarsh
 FlavioMarsiglia
 JamesMartin
 TinaMaschi
 RaymondMayers
 CurtisMcMillen
 Joseph R.Merighi
 Daniel R.Meyer
 NancyMudrick
 ChristianaNewhill
 Michael D.Niles
 William R.Nugent
 JulianneOktay
 JohnOrme
 DaphnaOyserman
 MarthaOzawa
 Deborah K.Padgett
 JuliaPaley
 LawrencePalinkas
 RuthParis
 SuePearlmutter
 WilmaPeebles
 Wilkins
 RogerioPinto
 David E.Pollio
 Cathryn C.Potter
 Kathleen JPottick

KarenRandolph
 Dominique E.Roe-Sepowitz
 LucindaRoff
 Kathleen A.Rounds
 William S.Rowe
 AllenRubin
 Mary C.Ruffolo
 Joseph P.Ryan
 ScottRyan
 AndrewSafyer
 DanSaunders
 AronShlonsky
 KristineSiefert
 CassandraSimmel
 BrendaSmith
 Paul R.Smokowski
 Lonnie R.Snowden
 PhyllisSolomon
 BarbaraSolt
 Karen M.Sowers
 MichaelSpencer
 ReneeSpencer
 KarenStaller
 MarlysStaudt
 LoriSteiker
 GailSteketee
 CalvinStreeter
 Paul H.Stuart
 SannaThompson
 EllenTuchman
 DavidTucker
 GeorgeUnick
 Charles L.Usher
 MichaelVaughn
 LynnVideka
 DarrellWheeler
 James H.Williams
 IreneWong
 Michael R.Woodford
 MichaelWoolley
 ElwinWu
 Ann-MarieYamada
 Yu-WenYing
 Dong P.Yoon
 JamesZabora
 MichaelZakour
 AllisonZippay
 AllenZweben



Society for Social Work and Research
11240 Waples Mill Road, Suite 200
Fairfax, VA 22030

With over 1200 members, the society....

- *encourages the design, implementation and dissemination of high quality research that addresses critical social practice and social policy issues;*
- *fosters a support network among researchers conducting research on social work practice and social policy in the United States and around the world;*
- *provides learning opportunities to improve the conduct of social work-relevant research and its application;*
- *endorses practices and policies grounded in the best available evidence;*
- *promotes increased research funding and training programs for social workers;*
- *provides formal recognition of significant contributions to social work-relevant research; and*
- *seeks active partnerships with other social work and research-related organizations to accomplish all of the above*

Address changes and membership inquiries should be directed to:

703-352-7797

info@sswr.org

[Http://www.sswr.org](http://www.sswr.org)